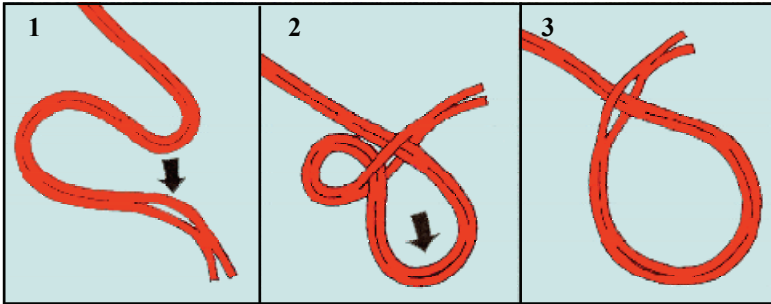


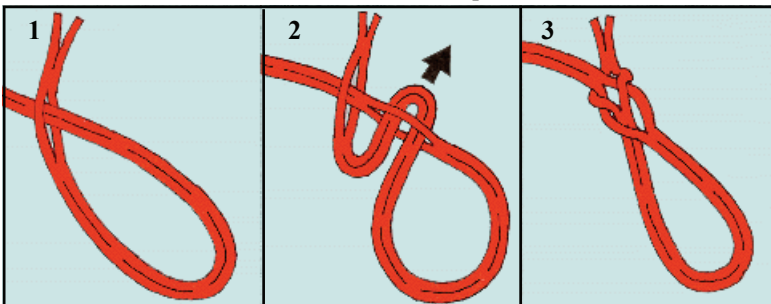
# How to use



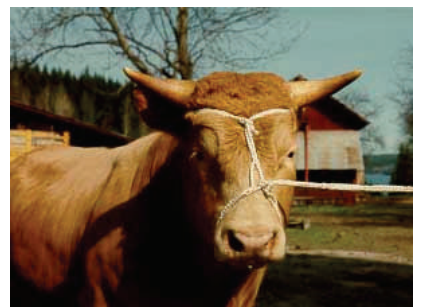
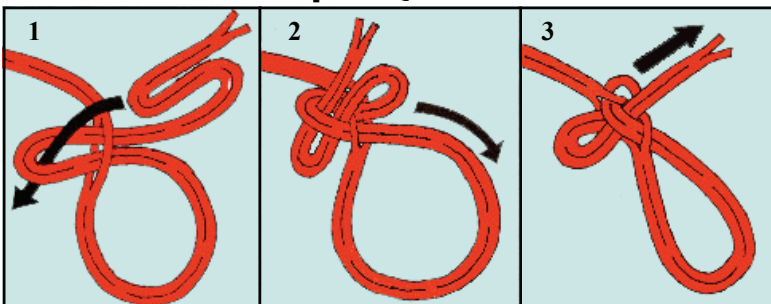
## Running Loop



## Fixed Loop



## Fixed Loop – Quick Release



# Facts about



**RunLock** is a swedish product, manufactured in 100% polyester in six different dimensions.

**RunLock** is flexible and does not break at heavy snatches.

**RunLock** does not have to be spliced or knotted - that's the reason why it retains its strength.

No.	DIA-METER MM	SIZE OF EYE MM	STRENGTH KG	STRETCH %	WT GM/ METRE
4	4	40	170	30	13
6	5	45	230	29	20
8	6	45	290	34	28
12	8	50	480	38	43
16	10	60	580	35	57
20	12	65	700	34	73

Manufactured by:

**TEXSOLV AB**

Vitlanda Gård • SE-662 98 TÖSSE  
Tel.+46(0)532-240 10 • Fax+46(0)532-240 60  
[www.texsolv.se](http://www.texsolv.se)  
[info@texsolv.se](mailto:info@texsolv.se)